

THE POWER OUTLET

APRIL 2026 NEWSLETTER of the SEATTLE ELECTRIC VEHICLE ASSOCIATION

"Education, demonstration, proliferation"

Since 1980



Seattle Electric Vehicle Association

SeattleEVA.org



The Power Outlet is a monthly update about electric vehicle activities in Seattle and around the State of Washington

*The Seattle Electric Vehicle Association (SEVA) is a non-profit organization of volunteers serving the Puget Sound region in Washington State since 1980. SEVA's mission is to **educate, demonstrate and proliferate the adoption of electric vehicles**. Monthly meetings are free and open to anyone interested in electric vehicles, and paid memberships are encouraged.*

SEVA has a [Facebook](#) page, too! Please like and follow us for up-to-the-minute updates.

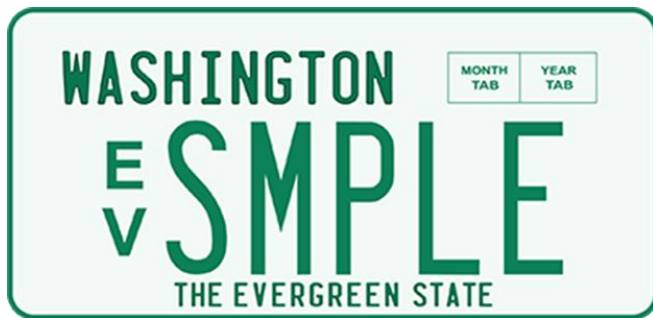
IN THIS ISSUE:

- **News** – BlueDot Motorworks, retro EV license plate
- **Feature of the Month** – Turning over a new LEAF battery
- **Spotlight** – Chinese EVs
- **Updates** – Central Washington EV evacuation survey, Revolve Motors
- **Conversion Corner** – Motorhome conversion? MLe auction
- **Events** – Drive Electric Earth Month events, Bellevue College show, Green River College rally, Burien Fathers' Day Car Show, Greenwood Car Show, Forth Roadmap in Seattle,
- **Club news** – Tesla Owners WA, Plug-In North Central Washington, Women of EVs, SEVA's May meeting is at 7 p.m. Tuesday, **May 12** at the old Rainier Brewery building, thanks to the MASA Synagogue, 3100 Airport Way S, Building 8
- **Support** – Four ways to support SEVA's efforts to transition to electric transportation
- **Resources** and links to Washington EV clubs, associations, charging networks and everything you need for the best electric driving experience and for the future of sustainable transportation.

NEWS

BlueDot Motorworks moves closer to production of hybrid conversion kit

After proving feasibility with on-road prototypes, BlueDot Motorworks is moving toward production of their hybrid EV conversion kit that can be used on any car, truck or van. To get to the next stage, they are looking for an engineer who can help design, build, and test the control and communication system for their "alpha" prototype. The goal is to mass produce a conversion kit that will let any mechanic install the electric motor, controllers and interface systems in one day, turning any gasoline vehicle into a hybrid. For more information, contact BlueDot founder and CEO Tom Gurski, tom@bluedotmotorworks.com or 206-457-3428.



New retro EV license plate now available to support charging

Washington's new "Keep WA Evergreen" specialty license plate now is available from the state Department of Licensing. The cost is \$162 per year for a numbered plate or \$214 a year for a personalized plate on a passenger car or truck. The fees will go toward funding charging station installation around the state. Learn more and apply for the Evergreen plates [here](#).

FEATURE of the MONTH

Turning over a new LEAF battery

When it comes to turning over a new LEAF, SEVA President Stephen Johnsen makes it look easy. His vintage LEAF just got a new (used) battery, and it was easier to do it himself than to get Nissan to do it!

His LEAF story started back in 2011, when his father got one of the early Nissan production cars. But then when the



Tesla Model S he ordered finally arrived, Stephen started driving the early LEAF. He remembered that he and SEVA member Ron Easley did efficiency tests up to Mowich Lake and as far as Chico CA, etc. Ron also bought a silver 2013 LEAF, and they even took it to race at Laguna Seca in California. Stephen ended up buying the LEAF when Ron got a Tesla Model 3. Between them, the car now has more than 100,000 miles.



But after 13 years of driving, the battery had degraded so much that it was useful only as a “grocery-getter,” Stephen said. But he likes the car because it has lots of interior room and fits his 6-4 frame well. He decided to try an upgrade to the car.

“It is one of the most DIY-friendly EVs,” he said. He found a wrecked 2015 LEAF in Port Townsend that had a battery with 11 bars and 80 percent health. Packs are the same size in

early models, he explained, so that made the battery swap feasible. Without a professional lift at home, he was able to use floor jacks and blocks of wood to lift the car up high enough and drop the battery onto a low cart. The battery pack weighs about 650 pounds. The tricky part was using a special device to plug into the OBD port because the car wouldn't recognize the new battery VIN. He used the LEAF Spy app to clear the error message and pair the new pack with the car.

With its newer battery pack, the car now gets about 86 miles of range, Stephen said. He takes advantage of the Nissan dealers that still have free CHAdeMO charging stations. And he now can limit charging to 80 percent to protect the life of the upgraded battery.



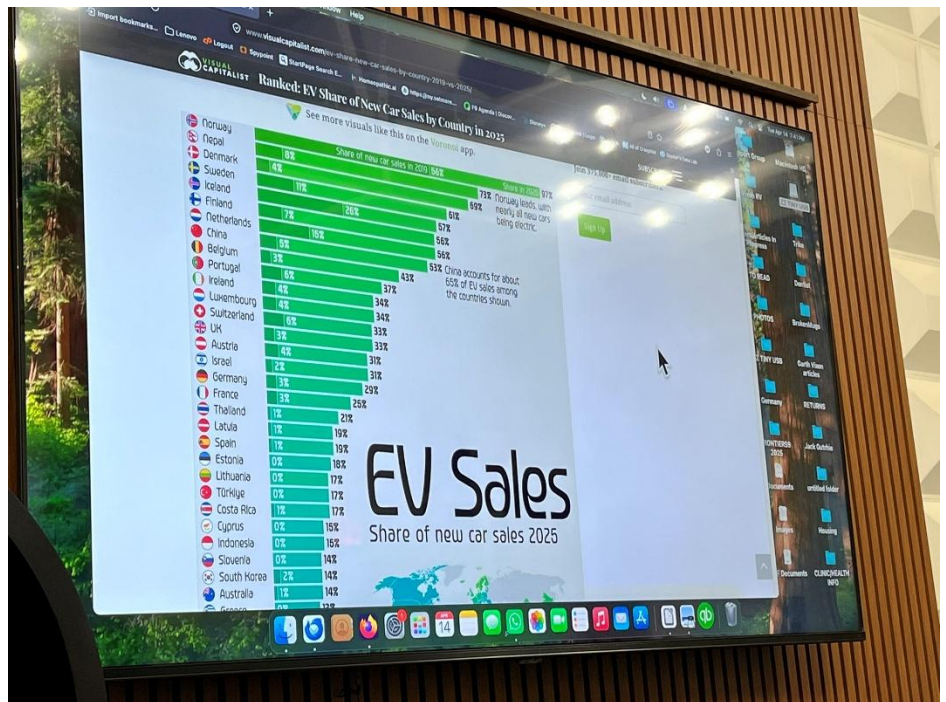
SPOTLIGHT on CHINA

Chinese EVs are everywhere outside of the U.S.

The news from overseas is full of new models and huge sales numbers for Chinese-built EVs. But most are not available at all in the United States. That's because U.S. tariffs on Chinese EVs have prevented them from being sold here, SEVA President Stephen Johnsen explained. BYD (Build Your Dreams) recently surpassed Tesla as the largest-volume EV maker in the world. And now, American car makers are studying how China's automakers are producing and marketing such large numbers of EVs.

Stephen reported that his brother recently visited Shenzhen in China and saw that most cars and scooters there are electric. Electronic delivery robots and drones are common. Most public parking spaces there have charging stations, too. He observed that Canada recently reduced their tariffs on Chinese EVs so it is likely that some Chinese models might be available north of the border soon. Chinese carmakers also are building production plants in Mexico.

SEVA member John Ruhland visited Brazil last December and learned that the country is a large importer of Chinese EVs. He got to check out BYD's newest models at a dealership in Sao Paulo, including everything from the compact Dolphin to large luxury vehicles. Most are priced in the \$30,000-\$60,000 range, he said. He added that he found the quality to be very good. Because gasoline and ethanol are very expensive there, EVs are popular.



According to global EV sales figures for 2025, in Norway, 97 percent of new car sales were electric. Nepal was second at 73 percent, then Denmark, Sweden, Iceland and Finland. China was at more than 53 percent. The U.S. was just at 10 percent, but the EV numbers are still growing. Last year, the best-selling cars in the U.S. were 1) Ford F150 pickup, 2) Chevy Silverado pickup, 3) Dodge Ram pickup and 4) Tesla Model Y.

UPDATES

Central WA EV drivers needed for evacuation survey

EV drivers in Central Washington are invited to participate in a survey about evacuation during a wildfire emergency. University of Washington PhD student Yu-Chen Chu presented her research and got assistance from SEVA members in developing the survey earlier this year. Residents of **Okanogan, Chelan, Kittitas, Yakima and Klickitat** counties (both seasonal and primary residents) are invited to participate and respond to the survey. Those who filled out the pilot survey earlier are, now encouraged to participate again with the final survey at this link:

https://uwashington.qualtrics.com/jfe/form/SV_e3QtLbUuPaTdDmu

Survey Details:

- Completion Time: Approximately 25 minutes.
- Deadline: May 31, 2026.
- Incentives: Participants will be entered into a drawing for 10 \$20 gift cards and 4 \$50 gift cards. (Note: This drawing is separate from the pilot testing).

For more information or questions, contact Yu-Chen directly at ychu24@uw.edu or 310-696-3718.

Eco Auto Northwest dealership evolves into Revolve Motors



Eco Auto Northwest, the independent used EV dealership that opened last fall in Renton, has changed its name to Revolve Motors. Co-founders and owners Genny Carter and Shannon Golbienio explained that they wanted a name that better represents their work and mission to make EVs more affordable and to keep them on the road. They also noted that “revolve” spelled backward is “EV lover.” The dealership is still located at 805 SW 10th St. in Renton. Former SEVA President Jay Donnaway now is providing consulting services at Revolve Motors.

CONVERSION CORNER

Motorhome conversion? SEVA member John Ruhland has offered his 1989 Vixen motor home for a conversion project. It’s designed to be the most aerodynamic motor home, with the original design done by Bill Collins of Delorean fame. Only about 555 were produced, and perhaps only a quarter are still running.

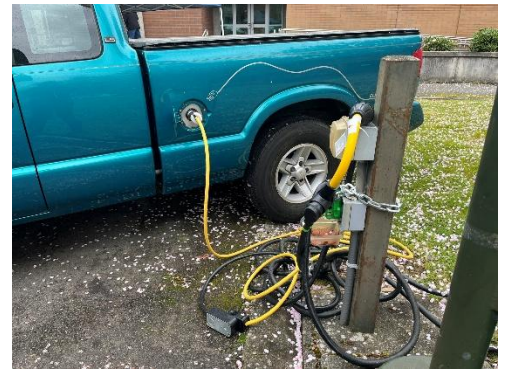
MLe Racecars auction update: MLe Racecars in Lake City liquidated its inventory in an auction in March. Unfortunately, the day after the auction closed, thieves broke into the shop and stole some of the equipment that had been sold in the auction before it could be delivered, SEVA President Stephen Johnsen reported. The thieves were interrupted in their work when an MLe owner arrived early, but they still made off with the goods in an unmarked van. The thieves are still at large and the stolen equipment has not yet been recovered.

EVENTS

Drive Electric Earth Month

- **April 26** - EV Test Drive and Information Expo, 10 a.m. to 3 p.m., Daimler Truck North America Headquarters, Portland, OR. Find event details and sign up [here](#).





SEVA members exhibited 11 vehicles at the Earth Day car show at Bellevue College April 13, including a Tesla Cybertruck (left), Chevy S10 conversion (above), BMW Z3 conversion (below left), and more (below). Photos by Grace



Green River College Car Show – On May 1, Green River College will host a Switch Rally for high school and college students who have built their own Switch electric go-carts. SEVA members are invited to exhibit their vehicles at the rally, which highlights the new EV tech training program at Green River College.

Burien Father's Day Car Show – SEVA will get space to exhibit this year at the annual Burien Father's Day Car Show on Sunday, June 21. The event takes place from 10 a.m. to 4 p.m. during the annual Strawberry Festival on SW 152nd St. and always draws a big crowd. To register for the event, send your name, email address, phone number and vehicle make, model and year to Grace Reamer at secretary@seattleeva.org.

Greenwood Car Show – June 27 - save the date! SEVA once again will be exhibiting at the Greenwood Car Show, the biggest car show in the Northwest. The show is from 8 a.m. to 4 p.m. on

the last Saturday in June on Greenwood Avenue. SEVA once again will be covering registration costs for members exhibiting, but donations toward the fees also are gratefully accepted. Once again, Charlie Tsai is coordinating the show for SEVA. To register, send your name, street address, email address, cell phone number, and the vehicle make and model and year to Charlie at treasurer@seattleeva.org.

Forth Roadmap 2026 – Save the dates! Forth in Portland will be bringing its national Roadmap conference to Seattle for the first time on Sept. 13-15. The annual conference brings together policymakers, engineers, utilities, advocates and industry leaders to tackle the biggest challenges in clean transportation. More than 130 speakers from across green transportation sectors will cover topics ranging from charging infrastructure and funding strategies to equitable deployment and emerging technologies. Forth aims to turn ideas into action and connect people who are shaping the future of transportation. Find more information and register [here](#). Volunteer opportunities will be available as well.

CLUB NEWS

Tesla Owners Washington is presenting several events this spring, such as joining the annual MG Club's Tulip Rallye Scavenger Hunt in Mount Vernon on April 25. Also coming up are a Charger Chat to share Tesla tips on May 2 at the South Hill Mall Supercharger, ARC Electric Boats Demo Ride on May 16, and Lunch & Libations on May 23 at Wild Fin in Vancouver. Find more information about events and joining TOWA [here](#).



Plug-In North Central Washington is celebrating Earth Day in April with several exhibits at local events, including Sunday, April 26 in Leavenworth. Plug-In NCW members will have EVs on display from 11 a.m. to 4 p.m. at the Meadow Stage and Icicle Creek Center for the Arts at the Sleeping Lady Resort. Learn more [here](#).



Women of Electric Vehicles (WEV) presents an Electric Vehicle Ride and Drive event from 6 to 8 p.m. on Thursday, May 14. The gathering will be hosted by Revolve Motors (formerly Eco Auto NW) at 805 SW 10th St. in Renton. For more information and to RSVP, contact WEV.Seattle@gmail.com. WEV members also gathered recently for a tour of the Electric Era shop in Seattle.



Seattle Electric Vehicle Association meets at 7 p.m. the second Tuesday of every month at rotating locations. The next meeting is on Tuesday, **May 12, 2026** at MASA Synagogue in the old Rainier Brewery building in south Seattle. The address is 3100 Airport Way South, Building 8, Unit, 110 (entrance near the giant painted mural). Gather to share cars at 6:30 p.m. Bring a friend. Open to everyone! The June meeting will return to the University Village west parking garage.

Please share your club news as well as your personal journey into the world of electric driving, along with photos. SEVA would like to spotlight profiles of EV pioneers in our newsletter. Please send your stories and photos to secretary@seattleeva.org.

SUPPORT

Please support SEVA and its outreach and advocacy activities with a donation. Your financial donation will help us reach more policymakers, funders and drivers statewide to advocate electric mobility, and will support expansion of our online resources. SEVA is a 501(c)3 non-profit organization, and any contribution you make is fully tax-deductible. Here are four ways you can help:

1. Make a one-time online donation through PayPal at [DONATE](#).
2. You also can make a direct contribution by check. The check should be made out to SEVA and mailed to our SEVA Treasurer at: P.O. Box 92, Renton, WA 98057-0092.
3. Register and contribute annual dues as a member of SEVA at [MEMBERSHIP](#).
4. Join us! Bring yourself, your EV and your enthusiasm for driving electric to our monthly meetings, events and car shows and share your knowledge and passion.

RESOURCES

SEVA aims to maintain a comprehensive list of the EV advocacy efforts ongoing in Washington, so we count on you to keep our lists and our website updated with the most current information. Following are the organizations and efforts we have compiled so far in Washington that have a presence online and on social media:

Websites:

- Drive Electric Washington – DriveElectricWA.org
- Seattle Electric Vehicle Association - SeattleEVA.org
- Plug-In America - PlugInAmerica.org
- Electric Auto Association - ElectricAuto.org
- Forth - ForthMobility.org
- Plugshare - Plugshare.com
- National Drive Electric Week - DriveElectricWeek.org
- Drive Electric Earth Day - DriveElectricEarthDay.org
- Plug In North Central Washington - PlugInNCW.com
- Coltura – Coltura.org
- Thurston Climate Action Team - ThurstonClimateAction.org
- Tesla Owners of Washington - TeslaOwnersWA.org

Social Media:

- [Northwest Tesla Owners](#)
- [Seattle Nissan Leaf Owners](#)
- [Seattle Tesla Model 3 Owners](#)
- [Seattle Electric Vehicle Association](#)
- [Seattle Tesla Model Y Owners](#)
- [Pierce County Electric Vehicle Information Exchange](#)
- [Spokane/Coeur d'Alene Tesla Club](#)
- [Inland NW Tesla Owners Group](#)
- [PNW Tesla](#)
- [Central Washington University EV Club](#)
- [Seattle Chevy Bolt/Bolt EUV Owners](#)
- [San Juan Islands Electric Vehicles](#)
- [Mid-Columbia Electric Vehicle Association](#)

Please share and distribute this newsletter widely within your EV networks and contacts. And please contribute your events, activities and stories, and SIGN UP to receive this free monthly newsletter by sending us an e-mail with your name, city, any affiliation and e-mail address to secretary@seattleeva.org. You can unsubscribe at any time with an e-mail to the same address. Thank you for your support of sustainable electric transportation!