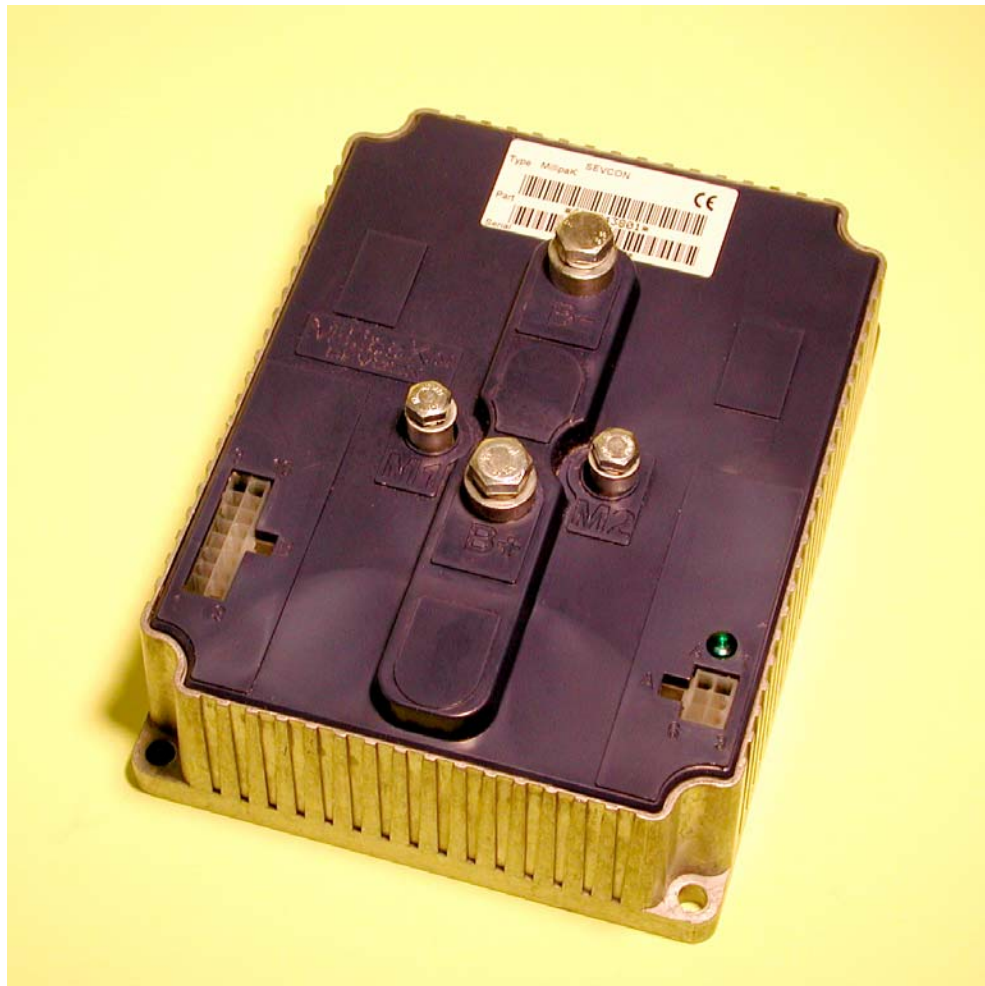




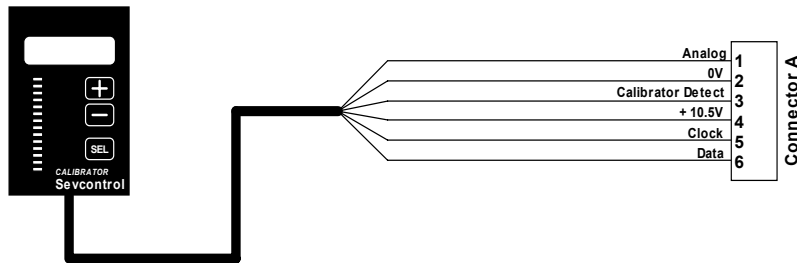
## Millipak 4Q Application Note

Setting Up Accelerator Input to use a 5K Ohm Potentiometer



**Required Tools:** Sevcon Calibrator (part number 662/14036), volt meter and latest personality list.

## Calibrator



The calibrator is a hand held tool which is used to configure, and adjust personalities. The hand held calibrator can also be used to test the system.

The controller must first be turned off before plugging the calibrator into connector A. Do not plug the calibrator into the controller while the power is on.

The calibrator allows limited access to the personalities until a pass word is entered. Once the proper pass word is entered, access to all personalities is allowed.

### Entering the pass word:

- Make sure controller power is turned off.
- Plug the calibrator into connector A.
- Turn on the power.
- The pass word is 2 2 2 2.  
Press the + button twice (slowly & deliberately)  
Press the – button twice  
Press the + button twice  
Press the – button twice  
Press the select button once.
- The calibrator will briefly display “ALL”, indicating that access is now allowed to all the adjustments.

### Using the calibrator

- Press the “select” button to move downward through the personality list.
- Use the + & - button to raise or lower a personality.
- Pressing and holding the + & - buttons at the same time, shows the personality reference number.
- Pressing and holding the + & - button at the same time for more than 5 seconds causes reverse movement through the personality list, as the select button is pressed. The red LED bar on the calibrator will blink continuously, indicating that the select button is reversing through the personality list. To exit this mode, press and hold the + & - button at the same time for 5 seconds. The red LED will stop blinking and turn on solid.

### Accelerator Inputs

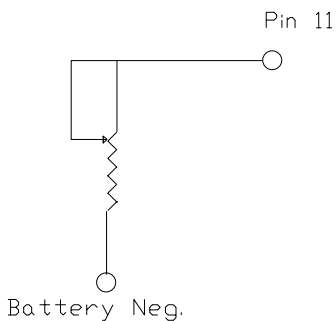
The Millipak controller allows for some flexibility in regards to different types of accelerators.

When using an accelerator module, IE: Sevcon Linear Accelerator, connect the accelerator signal into either pin 10 or pin 11.

When using a 5K Ohm potentiometer, connect the potentiometer between pin 11 and battery negative.

### Setting Up Controller For a 5K Ohm Accelerator Potentiometer.

#### Wiring Diagram Using 5K ohm Pot.



- Wire potentiometer as shown above, in wiring diagram.
- Connect calibrator into connector "A" of Millipak and power up controller.
- Enter pass word, to access all personalities.
- Place a volt meter between pin 11 and battery negative, measure the voltage with accelerator at minimum speed demand, this is the "Accel. Zero Voltage". Using the select button on the calibrator, go to the "Accel. Zero Voltage" personality and set this to the voltage measured.
- Leaving the volt meter connected, measure the voltage with the accelerator moved to maximum speed demand, this is the "Accel. Full Voltage". Using the select button on the calibrator, go to the "Accel. Full Voltage" personality and set this to the voltage measured.
- Disconnect the volt meter.
- Using the select button, go to the "analogue input configuration" personality, and set this to "2". This sets pin 11 as the accelerator input.
- Turn the power to the controller off, disconnect calibrator and turn the power to the controller back on.

The controller is now set up for you accelerator potentiometer.

**Note:** To determine the calibrator personality reference numbers for the personalities described above, contact Sevcon.